

Riverbend's

# Cottage Series



Simple designs...  
... to fit that special lot.



**RIVERBEND**

*Log Homes*

[www.riverbendloghomes.com](http://www.riverbendloghomes.com)

1.800.561.3000

# the *Stoney Ridge*

A simple, single level unit with a truss roof and convenient covered porch.



# the *Lakeside*

Loft style one or two bedrooms plus loft area. Full width covered front porch.



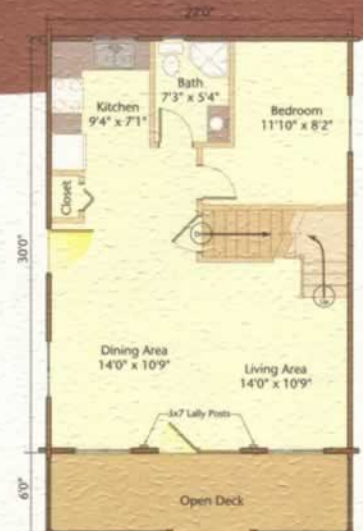
# the Chalet

Single level truss roof system with roof extended over front deck.



# the Mountaineer

Loft styling. Cathedral ceiling. Large open deck.



5661 Coastal View Court  
Cutler, ME 04626  
Phone: (207) 259-9719  
June 4, 1999

Aunden Rae, Sales Manager  
79 Carleton Dr.  
Nackawic, New Brunswick, Canada E6G 1W2

Aunden:

I am delighted with my Riverbend log cabin. It turned out beautifully!

The largest thing I had ever built, before this cabin, was a toy box for my son. A month ago I couldn't have told the difference between a joist and a truss, but I followed your directions and in less than one month my father and I were able to build this cabin.

I researched the log cabin kits very thoroughly in both Canada and the United States. No other company came close to providing your kind of quality for the price.

Additionally, I was very impressed with the outstanding support I received from your company throughout this project.

Many of the landowners on my lake have inquired about your company and commented on the excellent design of my cabin. I congratulate you on your excellent product and support!

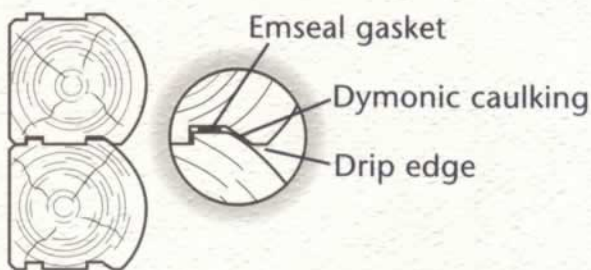
Sincerely,



Joseph T. Monaghan



## Triple-Seal System



The **Riverbend** building system is based on a precision milled double tongue and groove cedar log, with a very effective drip seal and mortise and tenon corners, cut to exacting computer generated specifications. Top quality gaskets and sealants ensure a weather tight, energy efficient exterior wall system.



The **Riverbend Cottage Series** has proven very popular for tourist accommodation applications, with the pre-cut packages offering a natural, cost-efficient and timely alternative building system for projects ranging from "COTTAGE CLUSTERS" to large snowmobile and ski lodges.



**RIVERBEND**  
*Log Homes*  
www.riverbendloghomes.com  
**1.800.561.3000**  
79 Carleton Drive, Nackawic, NB, E6G 1W2